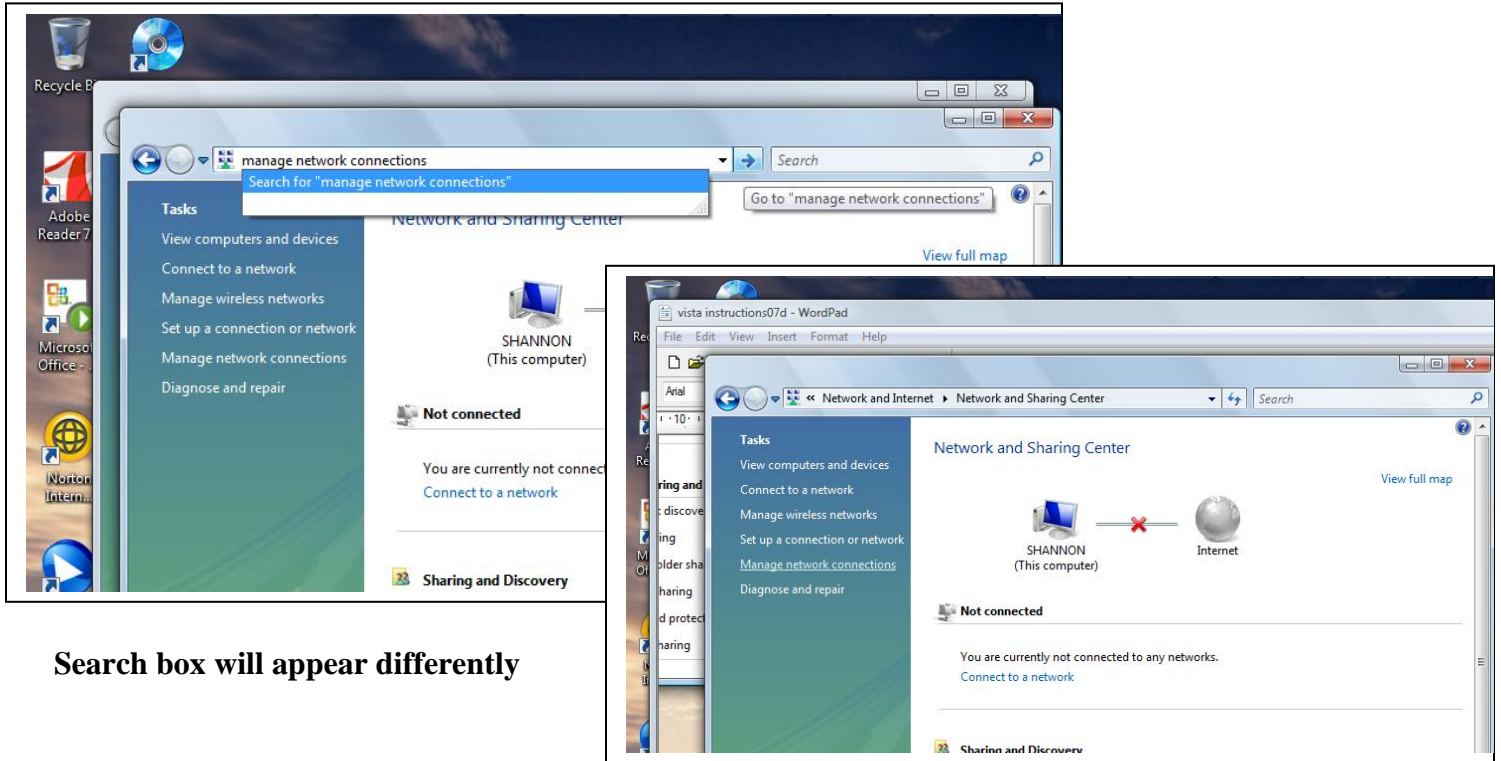


# Windows Win7 setup

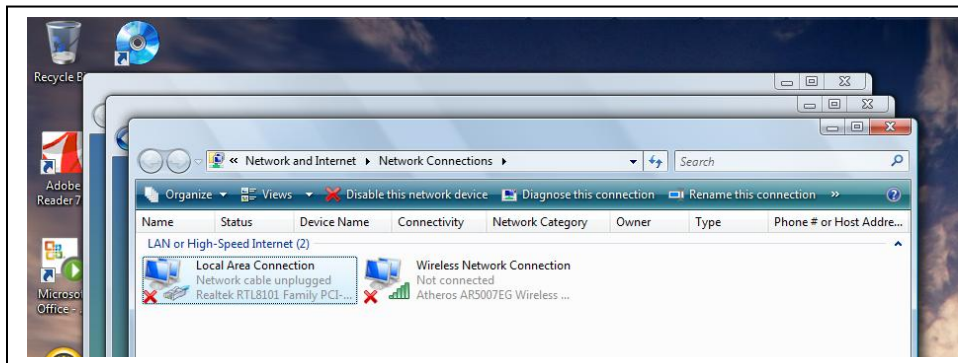
## Setting up your network settings

Under your start menu, find control panel (network connections) and click on that or do a search for “network center”. When you get the network and sharing centre, look for the “change adapter settings” on the left side. (Search panes in different versions of Win7 may work somewhat differently)



Search box will appear differently

In adapter settings there should be an icon for both wireless and LAN.



## Network LAN or Wireless Properties

Under LAN or High Speed Internet, there will be an icon that says Local Area Connection. Right click on Local Area connection and choose properties.

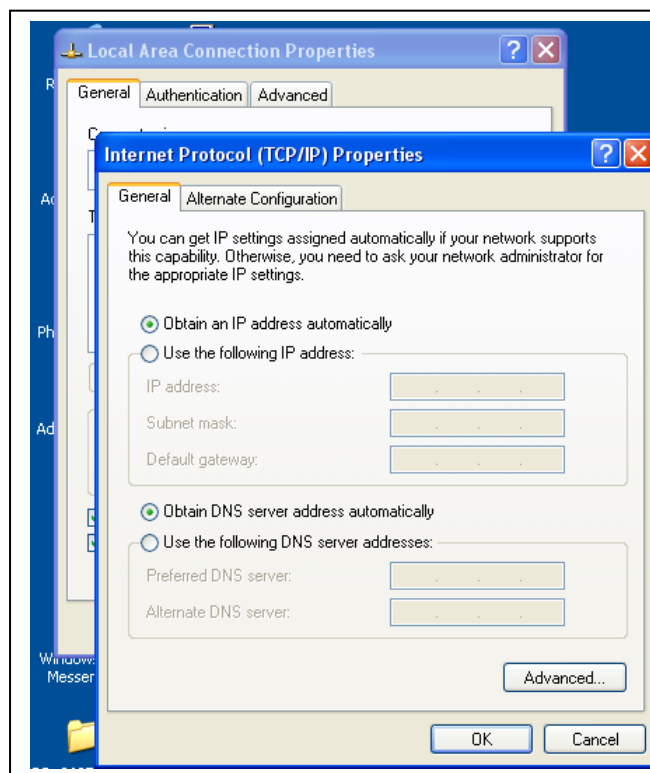
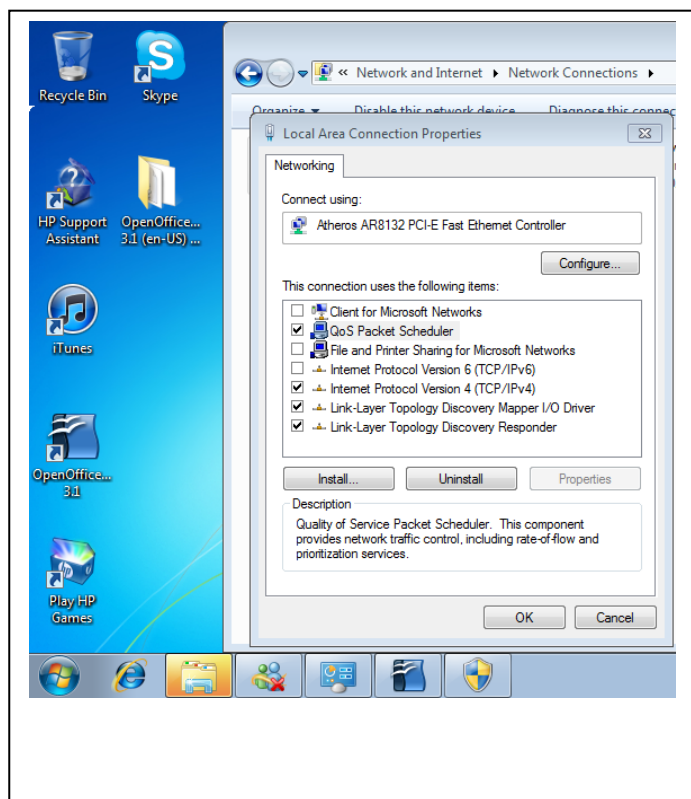
A window should come up that looks similar to the left one below. The box shows file and printer sharing unchecked – this is the necessary setting for the student network with file sharing disabled so others don't see your files and logging works properly. Unclick Client for Microsoft and IP6 as well. The tcp/ip ver 4 box and any anti virus boxes are checked as shown. You can leave any boxes checked that refer to your wireless, or the two link layer boxes, as those may not work otherwise

### **TCP/IP Properties**

From the network window that you already have open with your Local Area Connection Properties, click (highlight) TCP/IP Ver 4 and click on the Properties button, and you'll see a window like the box below right.

This is usually preset as shown, otherwise check off the boxes as shown. Click "ok" to finish..

Start over on your wireless connection (unless you don't have wireless). When finished, click on "ok" to get out of network setup



You may need to restart the machine for the setting to take effect. Plug your machine in to the internet or connect to a wireless access point to access the internet.

### **INTERNET EXPLORER SETTINGS**

If you are having problems at this stage, check your Internet Explorer settings. Go to Tools, choose Internet Options, Go to the Connections Tab and click on LAN Settings at the bottom right. The page you get should have all 4 boxes left unchecked. If not, clear the checkmarks. Then it should work properly. If not, you may need to check your firewalls settings so that scripts work.